

MISTLEDOG TRAIL

 - musical venue



We've made a little change to the Mistletoe Trail, this year. We've teamed up with Doghouse to bring you the **#BOAMISTLEDOGTRAIL**. How does it work? All you have to do is lead your pooch around the trail, take selfies and upload them to Instagram - then tag **@explore_bradfordonavon** and **@doghousewoofs** - the trail will end on Friday 15 December.



#BOAMISTLEDOGTRAIL

explore
BRADFORD ON AVON
this Christmas



Lights Switch On 2023

MUSICAL LINE-UP

Get into the swing of the season!

Want to get into the spirit of the season? We've organised festive tunes across the town for you to enjoy.

Russell Jones, who was a big hit last year, is back in BoA and we've got Shannon Kitchen of The Voice fame to perform in the town. There will also be choirs in The Shambles, Westbury Garden and at the Tithe Barn workshops.

Make sure you arrive early to secure a good space and watch the festivities unfold.



RAVELLO STAGE

@ Lamb Yard

4.45pm – Westward

5.15pm – Bum Notes

6pm – Lights Switch On

6.05pm – Shannon Kitchen

6.30pm – Russell Jones

SYSTEMAGIC STAGE

@ Westbury Garden

4.45pm – Freshford Choir

5.15pm – Russell Jones

6pm – Lights Switch On

6.05pm – Courage Choir

6.30pm – Bum Notes

7pm – Shannon Kitchen

AB DYNAMICS

@ The Shambles

5pm & 6.30pm –

The Bradford Carollers

BLB SOLICITORS

@ Tithe Barn Workshops

6.30pm – Joanna Deacon

7.10pm – Westward

BRADFORD ON AVON IS WHERE CHRISTMAS IS MADE

Our Christmas Lights celebrations (sponsored by Systemagic) will take place from 4pm to 8pm and will include tons of live music, gift fairs, festive food and drink and more. The lights will be switched on in Westbury Garden at 6pm. Radio Bath will be MCing the evening from Westbury Garden.

But the night does not end there as there will be even more music at Lamb Yard and Westbury Garden, carols in The Shambles and an incredible new light display along the river walk to follow for live music at the Tithe Barn workshops.

There will be the traditional large, decorated trees in Westbury Garden sponsored by **Bradford on Avon Lions Club**, at the Tithe Barn sponsored by the **Bradford on Avon Preservation Trust**, and outside the train station sponsored by **Great Western Railway**.

Additionally, if you head into Lamb Yard you will see the **Giving Tree** – beautifully decorated with glassware from local artists Alex Compton. This year, the Giving Tree is collecting for **Bath Cats and Dogs Home**, **The HUB** and **Julian House**.

The Bradford on Avon Rotary Club is opening **Santa's Grotto** at the Bullpit this year from 5.30pm.

In the run up to Christmas you can take part in another staple of the season – the popular **Elf Trail**, organised by Piha. **The Elf Trail** starts on Friday 18 November and runs until Christmas Eve – we will also have an elf in the Tourist Information Centre.

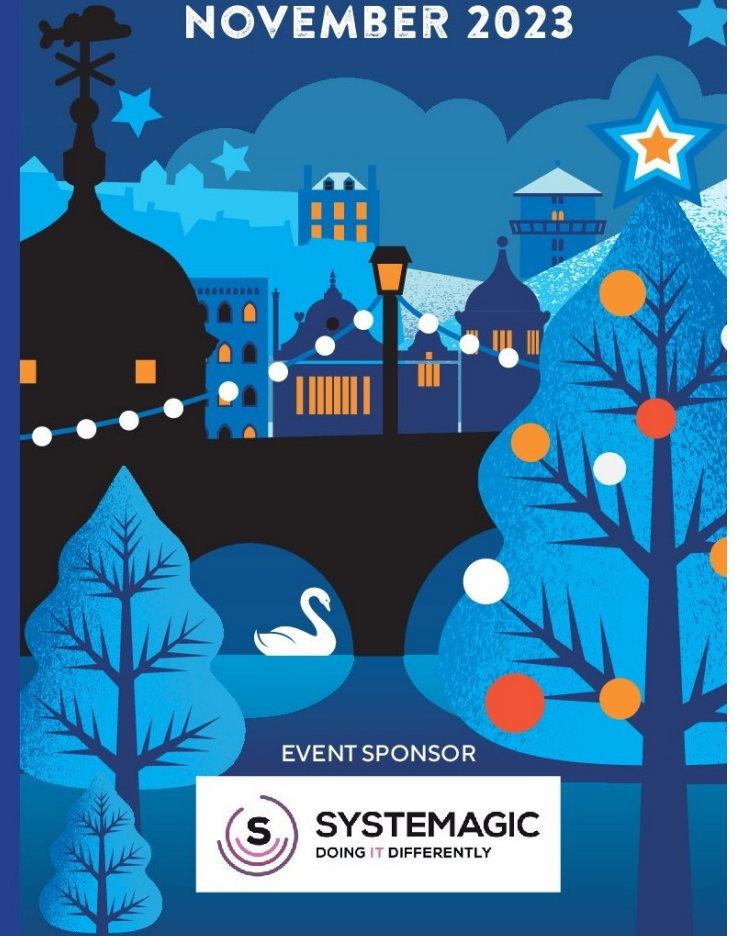
Travel Sustainably

As there will be stalls & amusements there will be no parking at St Margaret's Hall car park on the night. Parking space across the town will be limited so take the stress away by walking, cycling or using public transport.

BRADFORD ON AVON

Christmas Lights Switch On

FRIDAY 24TH
NOVEMBER 2023



EVENT SPONSOR

