

# Bradford on Avon Town Map

Stroll through the town and you will walk through time. The Romans, Georgians and Victorians have all left their mark - each creating a chapter in Bradford on Avon's remarkable story. Bradford on Avon is perfectly set in the dramatic Avon valley; it is a combination of river, canal and architecture of true character.

For more information visit [bradfordonavon.co.uk](http://bradfordonavon.co.uk)



## Wiltshire Music Centre

Wiltshire Music Centre is a nationally recognised concert hall which attracts world-renowned performers from across the classical, world, contemporary, jazz and folk genres [www.wiltshiremusic.org.uk/](http://www.wiltshiremusic.org.uk/)

## 1 St Mary Tory

High on the hill above the town is the chapel of St Mary Tory. It dates from the latter part of the 15th century where it was a chapel and a hermitage for weary pilgrims. The church was restored from ruin in 1877.

## 2 The Saxon Church of St Laurence

Bradford on Avon was an important religious centre in Saxon times and St Laurence's Church is one of the most complete and important Saxon buildings still in existence. It is believed to have been built in the 11th century possibly as a refuge for the relics of King Edward the Martyr, the step-brother of King Ethelred, who was murdered at Corfe Castle.

## 8 Iron Duke

The Iron Duke is a piece of industrial archaeology of national importance. Built in 1849 for Stephen Moulton to start his rubber manufacturing business in Bradford on Avon, it was the first machine of its kind in Europe. Its purpose was to meld fabric with rubber in order to make useful, saleable products.

## 7 The Town Bridge and Lock up

Parts of our iconic town bridge date from the 13th century and two original pointed arches may be seen from upstream at the south end. The bridge remained very narrow until it was doubled in width in 1767. The small building on the bridge is thought to have originated as a chapel but it was later converted to a 'lock up' where prisoners would be held before being brought before the magistrates.

## 6 The Shambles

Formerly part of the medieval meat market and houses the only timber framed houses in this stone built town. Today it is home to an array of independent shops and cafes.

## 3 Tithe Barn and Barton Farm

Bradford on Avon's Tithe Barn, at 51 metres long, is one of the largest and most important medieval barns in England. It was built in the mid 14th century as part of Barton Farm; the 'home farm' of the manor of the Abbess of Shaftesbury, the richest nunnery in the country.

## 4 Bradford on Avon Wharf

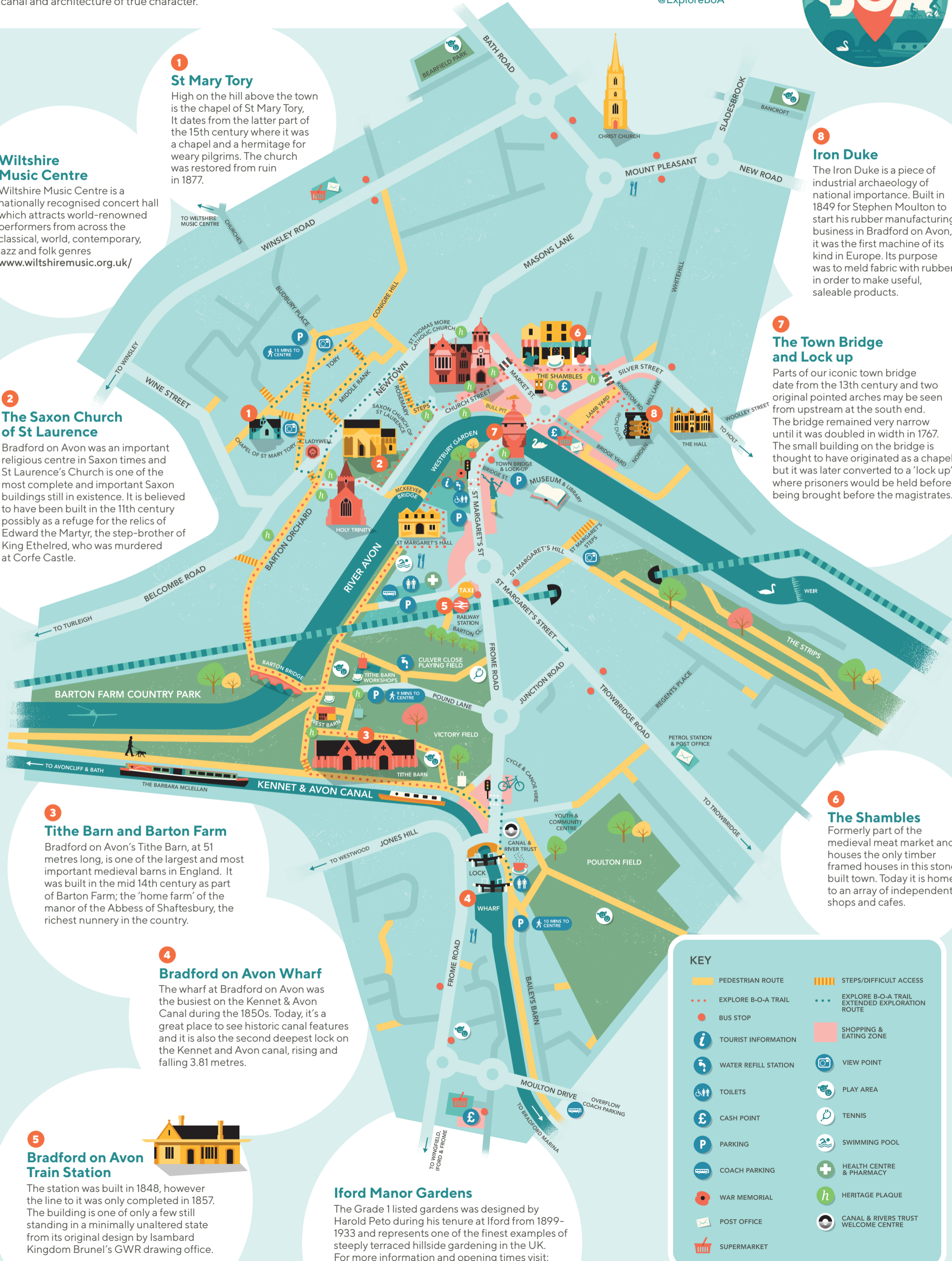
The wharf at Bradford on Avon was the busiest on the Kennet & Avon Canal during the 1850s. Today, it's a great place to see historic canal features and it is also the second deepest lock on the Kennet and Avon canal, rising and falling 3.81 metres.

## 5 Bradford on Avon Train Station

The station was built in 1848, however the line to it was only completed in 1857. The building is one of only a few still standing in a minimally unaltered state from its original design by Isambard Kingdom Brunel's GWR drawing office.

## Iford Manor Gardens

The Grade 1 listed gardens was designed by Harold Peto during his tenure at Iford from 1899-1933 and represents one of the finest examples of steeply terraced hillside gardening in the UK. For more information and opening times visit: [www.ifordmanor.co.uk](http://www.ifordmanor.co.uk)



### KEY

- PEDESTRIAN ROUTE
- EXPLORE B-O-A TRAIL
- BUS STOP
- TOURIST INFORMATION
- WATER REFILL STATION
- TOILETS
- CASH POINT
- PARKING
- COACH PARKING
- WAR MEMORIAL
- POST OFFICE
- SUPERMARKET
- STEPS/DIFFICULT ACCESS
- EXPLORE B-O-A TRAIL EXTENDED EXPLORATION ROUTE
- SHOPPING & EATING ZONE
- VIEW POINT
- PLAY AREA
- TENNIS
- SWIMMING POOL
- HEALTH CENTRE & PHARMACY
- HERITAGE PLAQUE
- CANAL & RIVERS TRUST WELCOME CENTRE